

Standard+

STEEL THICKNESS: 1 3/4" POLYURETHANE, R-16



Every detail guaranteed™



TRADITIONAL
CONTEMPORARY
CARRIAGE HOUSE

WHY HAVE MORE THAN
1.7 MILLION GARAGA
DOORS BEEN INSTALLED
SINCE 1983?

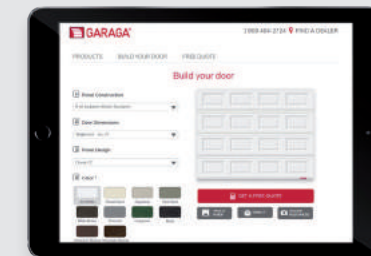
SUPERIOR PERFORMANCE

Get a product that exceeds your expectations. Our garage doors, inspired by Canada's severe weather, are **energy efficient** as they are first and foremost weathertight. They are **strong** and constructed with long-lasting components, rigorously selected to give a flawless finish, both up close and at a distance.



ONE OF THE LARGEST SELECTIONS IN THE INDUSTRY

With **thousands of possible combinations**, you are sure to find the garage door you are looking for. Select style, color and much more by visiting **garaga.com/designcentre**. There you can create and view online the perfect door to enhance your house and be assured you're making the best decision.



A PICTURE IS WORTH A THOUSAND WORDS

So that you can make an informed decision, all the options you want can be **quickly** calculated then presented to you in a **clear, illustrated quotation**. Once your garage door has been chosen, your quotation is automatically transmitted to our factory to be **precisely custom-crafted**.



Standard+ Shaker CC, 9' x 7', Ice White

Standard+ North Hatley LP, 10' x 7', American Walnut, 4 vertical lite Orion windows

TRADITIONAL

Standard+
STEEL THICKNESS: 1 3/4" POLYURETHANE, R-16

MODEL PATTERNS AND LAYOUTS

PRESTIGE (40 1/2" x 15")

9' x 7'

Prestige XL

16' x 7'

Prestige CC

SHAKER (21" x 15" and 40" x 15")

9' x 7'

Shaker CC

16' x 7'

Shaker XL

CLASSIC (21" x 13" and 40" x 13")

9' x 7'

Classic CC

16' x 7'

Classic MIX

Classic XL

Classic XL

Novatech Match your Prestige garage door with the Orleans, London or Sydney entry doors from Novatech's Prestige Collection

COLORS

STANDARD

Ice White

Desert Sand

Claystone

Dark Sand

Moka Brown¹

PREMIUM²

Charcoal

Evergreen³

Black

American Walnut

Chocolate Walnut

FOR A CONTEMPORARY LOOK,
ADD A WINDOW LAYOUT

Standard+ Classic CC, 10' x 8', Moka Brown, window layout: Right-side Harmony

SIZES

Widths from 8' to 18', in 1" increments. Heights from 6'6" to 8', in 3" increments. See your garage door dealer for more details on oversized doors available.

WARRANTY

Door sections: limited lifetime

Dura+ hardware: 2 years

Weatherstripping: 1 year

Windows: 10 years against seal defects

1 year for thermal break



Standard+ Prestige XL, 9' x 8', Moka Brown, Cachet Windows/Coordinated with Orleans entry door with Cachet stained glass from Novatech's Prestige Collection



Standard+ Shaker XL, 16' x 8', Desert Sand, 4 vertical lite Orion windows



Standard+ Classic CC, 8' x 7', Ice White, 4 lite Orion windows

¹Corresponds to GENTEK Commercial Brown #562
²Visit garaga.com/premiumcolors to learn more about Garaga's Premium Colors
³Not available for Shaker and Prestige patterns

GENTEK
GENTEK BUILDING PRODUCTS Visit garaga.com/gentek to see Gentek's equivalent aluminum capping

CONTEMPORARY

Standard+
STEEL THICKNESS: 1 3/4" POLYURETHANE, R-16

MODEL PATTERNS AND LAYOUTS

VOG® (40" x 1 1/4")



9' x 7' 16' x 7'



Vog Vog

MODERNO (3/16" continuous lines)



9' x 7' 16' x 7'



Moderno Multi Moderno Multi

GROOVED (1" continuous lines)



9' x 7' 16' x 7'



Grooved Grooved

FLUSH



9' x 7' 16' x 7'



Flush Flush

Novatech

Match your Vog garage door with a Vog entry door from Novatech's Design Collection



Moderno 2 beads Moderno 2 beads

COLORS

STANDARD



Ice White



Desert Sand



Claystone



Dark Sand



Moka Brown¹

PREMIUM²



Charcoal



Evergreen³



Black



Chocolate Walnut

GENTEK
GENTEK BUILDING PRODUCTS Visit garaga.com/gentek to see Gentek's equivalent aluminum capping

¹Corresponds to GENTEK Commercial Brown #562
²Visit garaga.com/premiumcolors to learn more about Garaga's Premium colors
³Not available for Vog pattern

ADD A WINDOW LAYOUT



Standard+ Moderno Multi, 16' x 8', Chocolate Walnut, window layout: Left-side Harmony

SIZES

Widths from 8' to 18', in 1" increments. Heights from 6'6" to 8', in 3" increments. See your garage door dealer for more details on oversized doors available.

WARRANTY

Door sections: limited lifetime	Windows: 10 years against seal defects
Dura+ hardware: 2 years	1 year for thermal break
Weatherstripping: 1 year	



CARRIAGE HOUSE

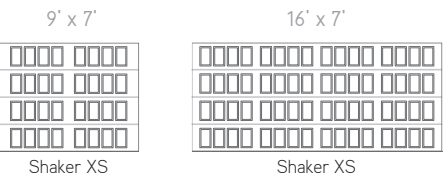
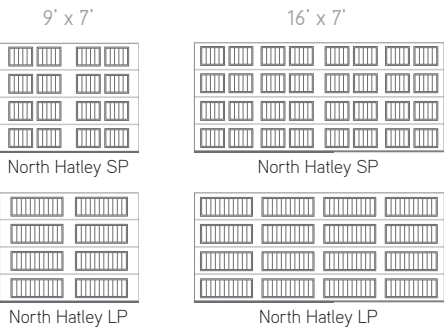
Standard+
STEEL THICKNESS: 1 3/4" POLYURETHANE, R-16

MODEL PATTERNS AND LAYOUTS

NORTH HATLEY (19 3/4" x 15" grouped by 2 and 40 1/2" x 15")



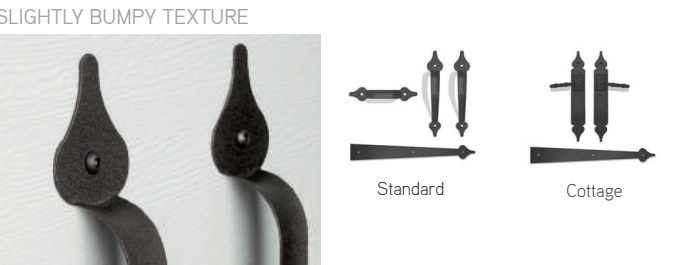
SHAKER (8 1/2" x 14" grouped by 4)



COLORS



DECORATIVE HARDWARE



SIZES

Widths from 8' to 18', in 1" increments. Heights from 6'6" to 8', in 3" increments. See your garage door dealer for more details on oversized doors available.

WARRANTY

Door sections: limited lifetime
Dura+ hardware: 2 years
Weatherstripping: 1 year

Windows: 10 years against seal defects
1 year for thermal break



Standard+ Shaker XS, 9' x 7', Desert Sand, Clear windows



Standard+ North Hatley LP, 9' x 8',
Chocolate Walnut, 8 lite Orion windows



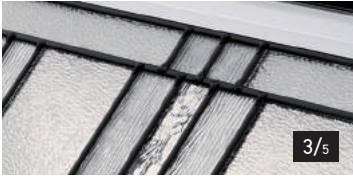
Standard+ North Hatley SP, 8' x 7', Ice White,
windows with Richmond Arch Inserts

GENTEK Visit garaga.com/gentek to see Gentek's equivalent aluminum capping

¹Corresponds to GENTEK Commercial Brown #562
²Visit garaga.com/premiumcolors to learn more about Garaga's Premium colors
³Not available for Shaker XS

WINDOWS (21" X 13" OR 40" X 13")¹

STAINED GLASS

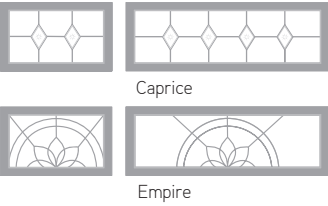
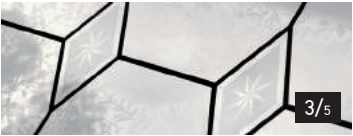


Patina caming



Zinc caming

PRINTING PROCESS



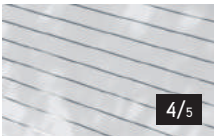
Caprice

Empire

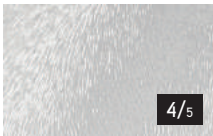
TYPES OF GLASS



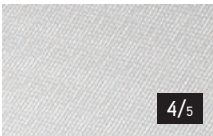
Azur



Masterline



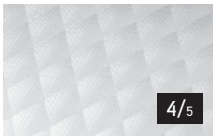
Chinchilla



Screen



Pinhead



Soft



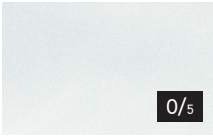
Fluid



Glue Chip

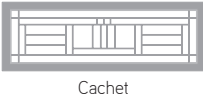


Satin



Clear²

Privacy Level: **X/5**



Cachet

ORION



This window has aluminum grids inserted between the two panes of glass.



4 lites



4 vertical lites



8 lites

DECORATIVE INSERTS



Decorative inserts are installed on the exterior side of the window (easy to remove).



Stockton



Prairie



Cathedral



Sherwood



Cascade



Waterton



Richmond



Williamsburg[†]



Richmond Arch



Williamsburg[†]



Bellevue



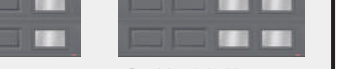
Williamsburg[†]



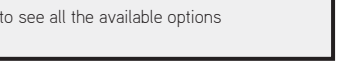
Williamsburg[†]



Williamsburg[†]



Williamsburg[†]



Williamsburg[†]



Williamsburg[†]

COORDINATES WITH **Novatech®**

Garaga is proud to collaborate with entry door manufacturer, Novatech, so we can offer you products that go together perfectly.

Visit garaga.com/novatech to see what coordinates with our garage doors and windows.



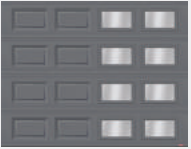
WINDOW LAYOUTS



Left-side Harmony



Outer Harmony



Double-right Harmony

Visit our site at garaga.com/windowlayouts to see all the available options

¹To see what size windows are available, visit garaga.com/designcentre
²Clear 40" x 13" thermopane glass is also available with the Low-E Argon energy option

[†]For all the available Williamsburg Inserts, visit garaga.com/inserts

GARAGA CONSTRUCTION
MAKES ALL THE DIFFERENCE



RUGGED & DURABLE



THERMALLY EFFICIENT



REFINED DESIGN

1 INTERLOK™ JOINT



Located between sections, this joint blocks air infiltration due to its triple-contact weatherseal.



Makes sections very strong as it is mechanically interlocked and not bonded.

2 WOOD END BLOCKS



The most effective thermal breaks, they eliminate any transfer of cold or heat between materials.

3 REINFORCED METAL PLATES



With 14-gauge thickness, they are used to solidly attach hinges, handles and operator bracket.

4 HIGH-PERFORMANCE WEATHERSTRIPPING



Our weatherstripping ensures increased weathertightness and stays flexible through the coldest temperatures.

5 POLYURETHANE



High-pressure injected foam provides R-16 thermal resistance for 1 3/4" doors.



Because it adheres to the section walls, it provides a high level of rigidity to the door.

6 CONTINUOUS WOODGRAIN



Up close or at a distance, our embossed woodgrain finish is flawless and very refined.

7 MOLDED WINDOW FRAMES



Both our interior and exterior window frames are molded without joints or any visible screws. They are made of synthetic resin that is sun resistant to keep their good looks over the years.



GARAGA
lab

In garage door comparison tests, Garaga wins hands down. Watch our 45-second videos at garaga.com/lab



To save energy, all components of a garage door must be taken into consideration (joints between sections, weatherstripping, end blocks, etc.) and not just its thermal resistance R-value as that only refers to the construction of the sections.

TODAY'S LOOK!

SIGNED



GARAGA®

Novatech®



Standard+ Vog, 10' x 7', Black, window layout: Left-side Harmony / Coordinated with Vog entry door from Novatech

LiftMaster® Quiet and reliable garage door openers

ELITE SERIES®



- Ultra quiet
- Belt or chain drive
- ¾ HP, AC or DC power



- Ultra quiet
- Jackshaft
- DC power

PREMIUM SERIES®



- Quiet
- Belt or chain drive
- ½ HP, AC or DC power

USEFUL ACCESSORY

Automatic Garage Door Lock

To ensure greater security for your home, can be activated with your smartphone.



myQ Technology

Allows you to open or close your garage door from anywhere by using a smart device such as a watch, telephone, tablet or laptop.



8500 25th Avenue
Saint-Georges QC
G6A 1K5
Canada

418 227-9458
info@garaga.com
garaga.com



**YOUR
GARAGA
DISTRIBUTOR**

For all technical specifications for the Standard+ and the latest updates, visit www.garaga.com. Garaga has established continuous improvement programs for all its products. As a result of this ongoing quest, technical specifications for various doors are subject to change without notice. The door colors and the windows shown are as exact as printing techniques will allow. Please request an actual color sample. Trademarks and registered trademarks of Garaga Inc. are denoted by TM, ® and © respectively. © Garaga Inc. 2018 - All rights reserved - Printed in Canada - 95107/01/2018/60K

logo FSC